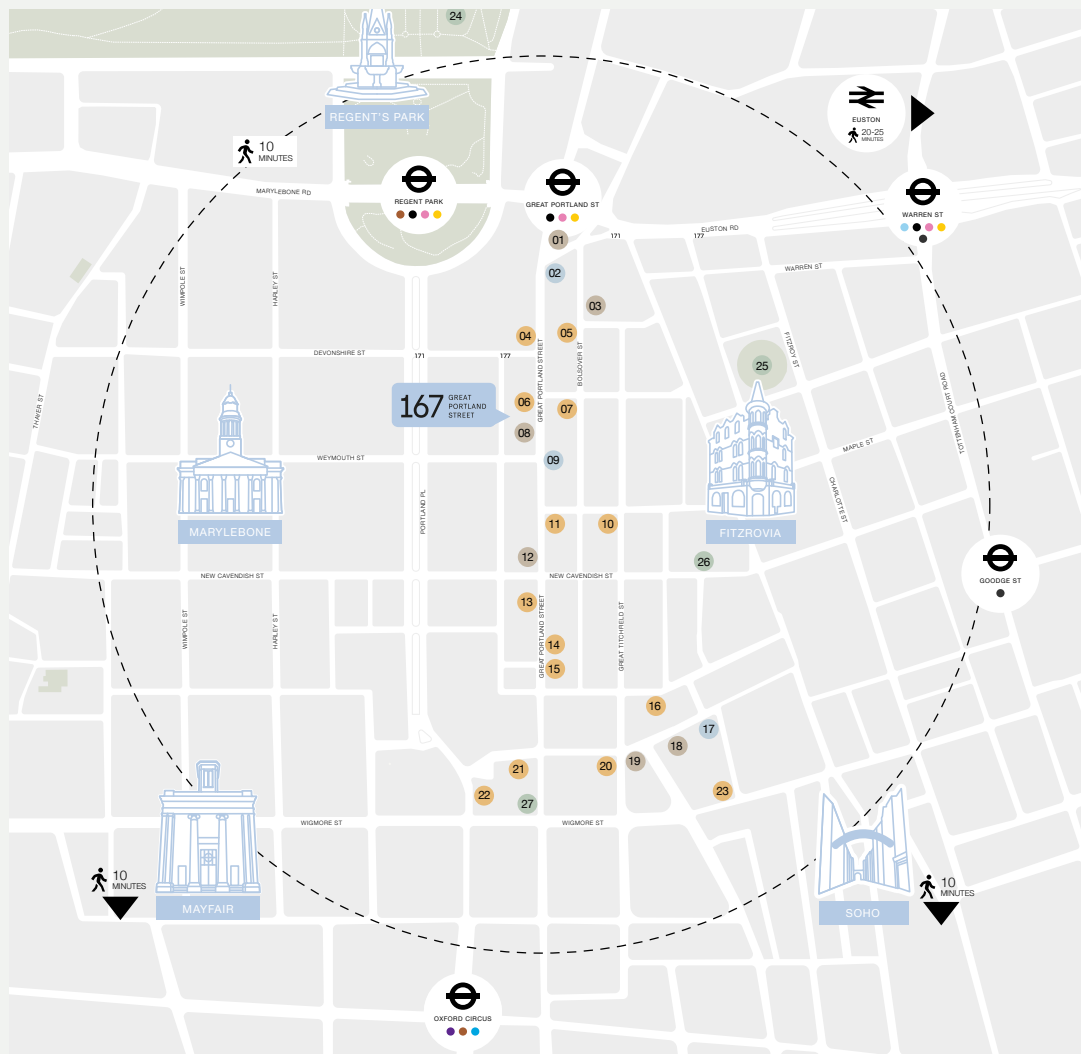


# 167 GREAT PORTLAND STREET

167-169 GREAT PORTLAND ST, LONDON W1W 5PF



- |    |   |    |   |
|----|---|----|---|
| 01 | Black Sheep Coffee                        | 16 | Meraki Greek Restaurant & Bar Fitzrovia |
| 02 | The Albany                                | 17 | The Green Man                           |
| 03 | Peyton and Byrne Bakeries                 | 18 | Scandinavian Kitchen                    |
| 04 | Ibérica Marylebone (PART OF FITZROVIA CO) | 19 | Kaffeine Coffee                         |
| 05 | Honey & Smoke Grill House                 | 20 | Riding House Fitzrovia                  |
| 06 | Kibele Restaurant (PART OF FITZROVIA CO)  | 21 | Madera at Treehouse London              |
| 07 | Dermatino                                 | 22 | The Wigmore                             |
| 08 | Starbucks (PART OF FITZROVIA CO)          | 23 | Mortimer House Kitchen                  |
| 09 | Sixes Social Cricket                      | 24 | Regent's Park                           |
| 10 | Caravan Fitzrovia Restaurant              | 25 | Fitzroy Square Garden                   |
| 11 | Clipstone                                 | 26 | Rumble                                  |
| 12 | GAIL's Bakery Great Portland Street       | 27 | Psycle Oxford Circus                    |
| 13 | Portland (PART OF FITZROVIA CO)           |    |   |
| 14 | Sushi Atelier                             |    |   |
| 15 | Kibako London                             |    |   |

● PUB / BAR
 ● COFFEESHOP
 ● RESTAURANT
 ● PARK / GYM

# Welcome to Great Portland Street

Discover the vibrant business community on Great Portland Street in the prestigious Fitzrovia neighborhood, offering easy access to Soho, Mayfair, and Marylebone. With excellent transport links, world-class amenities, and the tranquility of Regents Park nearby, it's an ideal location for professionals. At FitzroviaCo, we aim to redefine the real estate experience by creating environments where businesses thrive and individuals flourish, focusing on innovation, sustainability, and community to shape the future of urban living and working.

# Timeless Architecture, Contemporary Workspaces.



OWN FRONT DOOR



TENANT LOUNGE



SUSTAINABILITY FOCUS



FULLY FITTED  
OFFICE SUITES



GREAT CONNECTIVITY



CYCLE STORAGE



ORIGINAL ARCHITECTURAL  
FEATURES



LOCKERS AND  
SHOWER FACILITY



# Space Available

6TH FLOOR  
1,098 SQ FT | 13 DESKS

5TH FLOOR  
NOT AVAILABLE

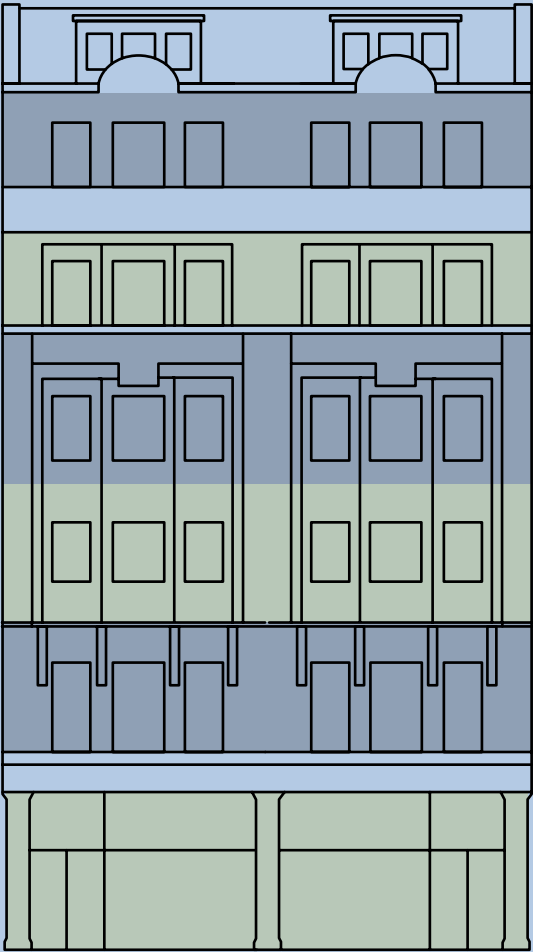
4TH FLOOR  
NOT AVAILABLE

3TH FLOOR  
1,357 SQ FT | 28 DESKS

2ND FLOOR  
1,362 SQ FT | 16 DESKS

1ST FLOOR  
1,435 SQ FT | 16 DESKS

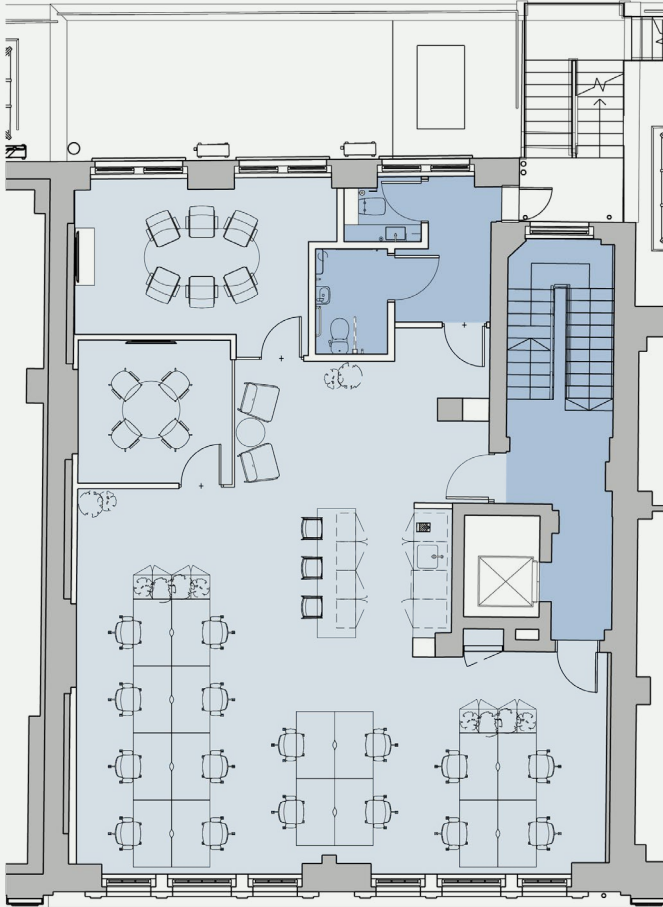
GROUND FLOOR







# First Floor



## WORKSTATIONS

16 Fixed Workstations



## MEETING

1 x 4-Person Meeting  
1 x 8-10 Person Meeting



## BREAKOUT

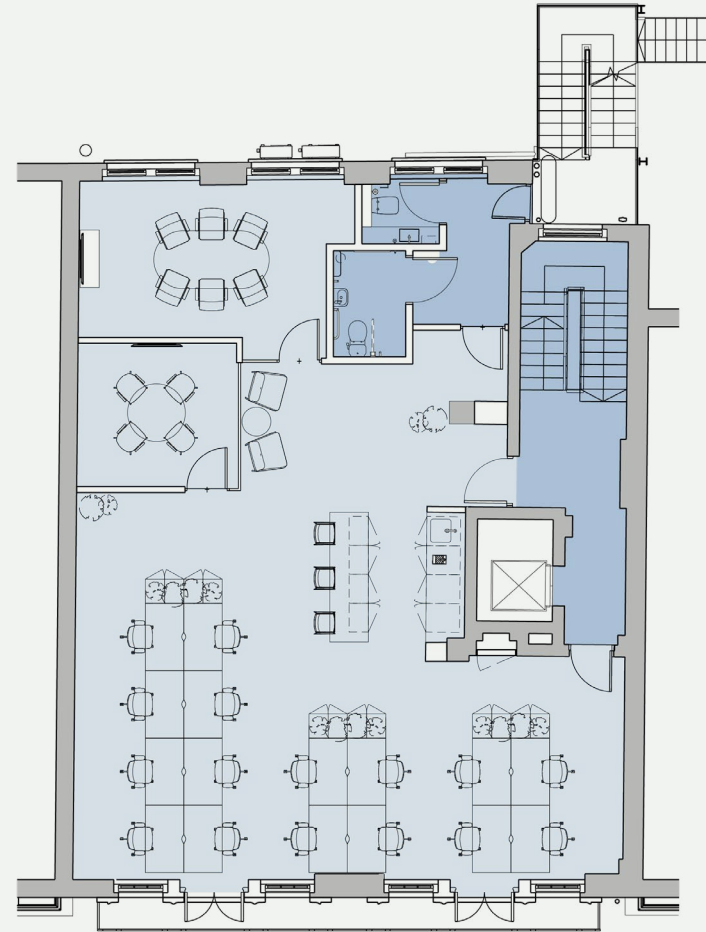
Welcome Lounge  
Kitchen with 3-Person  
Island



## AMENITY

Suite Accessed WCs  
High Speed WiFi

# Second Floor



## WORKSTATIONS

16 Fixed Workstations



## MEETING

1 x 4-Person Meeting  
1 x 8-10 Person Meeting



## BREAKOUT

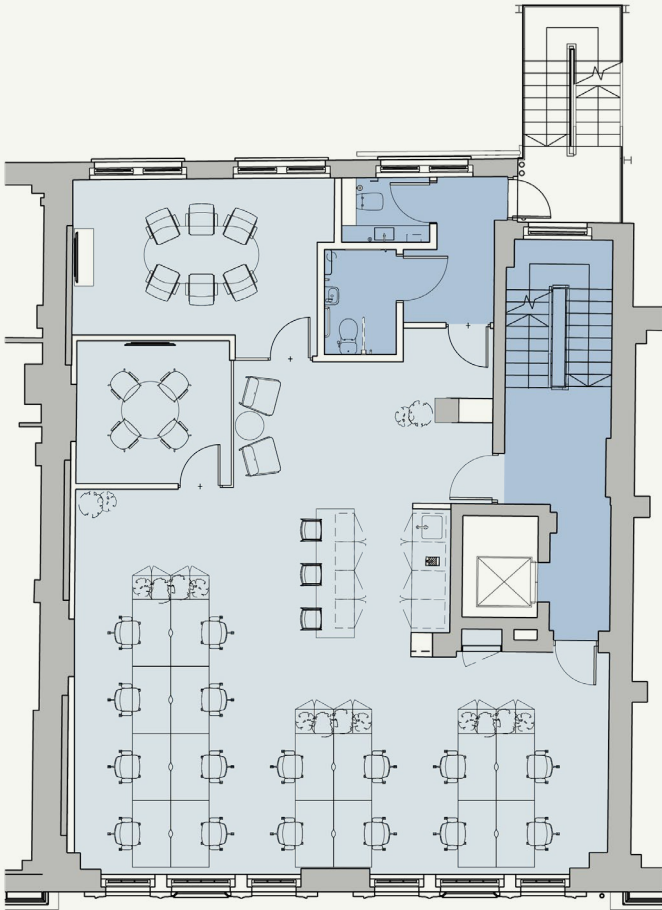
Welcome Lounge  
Kitchen with 3-Person  
Island



## AMENITY

Suite Accessed WCs  
High Speed WiFi

# Third Floor



WORKSTATIONS  
28 Fixed Workstations

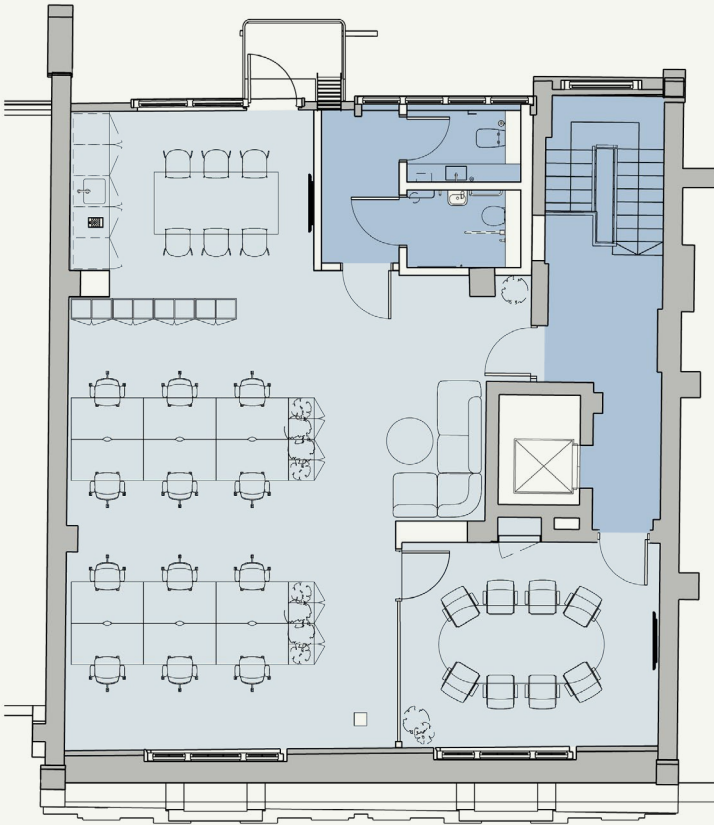


BREAKOUT  
Welcome Lounge  
Kitchen with 3-Person  
Island



AMENITY  
Suite Accessed WCs  
High Speed WiFi

# Sixth Floor



WORKSTATIONS  
12 Fixed Workstations



MEETING  
1 x 8-10 Person Meeting



BREAKOUT  
Welcome Lounge  
Kitchen 6-Person Island  
Soft Seating Meeting



AMENITY  
Suite Accessed WCs  
High Speed WiFi



RENT  
POA

RATES  
POA

SERVICE CHARGE  
POA

TOTAL OUTGOINGS  
POA

FIBRE  
FULLY CONNECTED  
PLUG AND PLAY

EPC  
TARGET B+

MANAGED BY

Oval

PART OF

fitzrovia.co

BRAND BY

kin

Colliers

Max Chalk  
Max.Chalk@colliers.com | +44 7522 867157

Joseph Mishon  
Joseph.Mishon@colliers.com | +44 7876 724488

RX LONDON

Catherine Lloyd  
Catherine.lloyd@rx.london | +44 7795 445833

Jack Rose  
Jack.rose@rx.london | +44 7590 814753

Jack Moates  
Jack.moates@rx.london | +44 7494 232394